

# EJ-770T | EJ-774T

## STATIONARY TRANSMISSION SYSTEM



EJ-770T



EJ-774T

The stationary transmitting solution for all our UHF guides series. EJ-770T/774T supports in-ear monitoring with optional RCA audio inputs and XLR microphone input. You may choose upon which model of receivers you would like to work with and EJ-770T/774T provides you with the solution for stationary transmission.

Model Name	EJ-770T	EJ-770T-300	EJ-770T-500	EJ-770T-16CH	EJ-774T	EJ-774T-300	EJ-774T-16CH
WT-350				Not Available			
WT-300		√				√	
WT-500		√	√			√	
WT-808				√			√
DiGiBee				Not Available			
WT-600				Not Available			
EJ-5	√				√		
EJ-7	√				√		

\*EJ-770T-500 only for (584 608 MHz)

16-96

channel



classroom



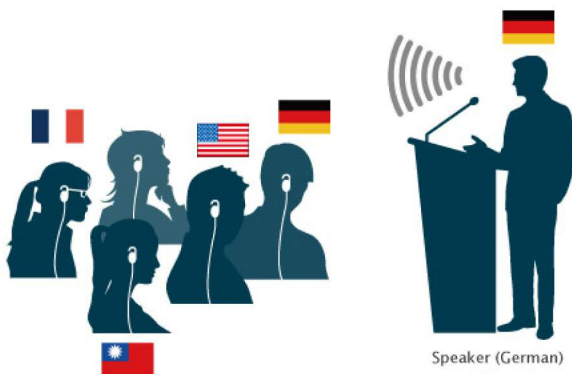
interpretation



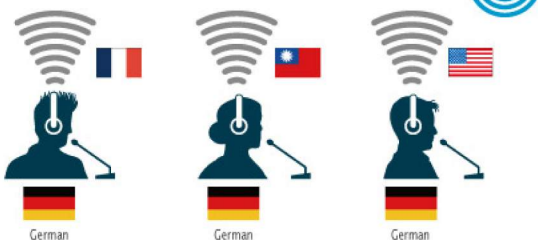
EJ-770T rear



EJ-774T rear



Speaker (German)



German

German

German

### GENERAL

Carrier frequency range	514 MHz ~ 870 MHz
RF output	Hi: 16 dBm / Low: 10 dBm
Antenna	TNC connector
Monitor output	450 mW @ 32 Ω
Aux inputs	Mic in -6.3Ø and XLR; Aux in-RCA
Earphone jack	3.5 mm, stereo
Operating range	100 M

### EJ-770T

Power requirements	100 ~ 240 VAC / 12 VDC, 1 A switching power supply
Dimensions (D x W x H)	214 x 215 x 44 (mm)
Weight	1.25 kg

### EJ-774T

Power requirements	100 ~ 240 V AC / 12 V DC, 2 A; switching power supply
Dimensions (D x W x H)	210 x 430 x 44 (mm)
Weight	2.4 kg